

Historical Society of Greater Lansing  
 Historical Society of Greater Lansing  
 Historical Society of Greater Lansing  
 Historical Society of Greater Lansing

# NEWS

September 2002

**Historical Society  
 of Greater Lansing**

Executive Board

**Officers**

- Craig A. Whitford  
*President, Editor*
- Harry Emmons  
*Vice President*
- David Rumohr  
*Secretary*
- William A. Atkinson  
*Treasurer*

**Trustees**

- Robert Hudson
- Jerry Lawler
- Jim MacLean
- Fr. Geo. C. Michalek
- Gertrude Mitchell
- Linda Peckham
- Ron Turner
- Seymour Vanderske

**How to contact us...**

Historical Society  
 of Greater Lansing

P.O. Box 12095  
 Lansing, MI 48901

Tel: 517.394.4443  
 Fax: 517.394.0579

E-mail:  
[LansingHistory@aol.com](mailto:LansingHistory@aol.com)

A Picture  
**POST CARD**  
 Walking Tour  
 of Lansing

**It's** time to wear those comfortable shoes and join us on a walk down memory lane through downtown Lansing. Take a trip back in time as we discuss the buildings and businesses of Lansing's past.

Our walking tour will begin at the Capital Area District Main Library, then head north to Michigan Avenue, then south to Washington Avenue and back to the Library.

A descriptive handout featuring photographs, picture postcards and a tour map will be available to guests.

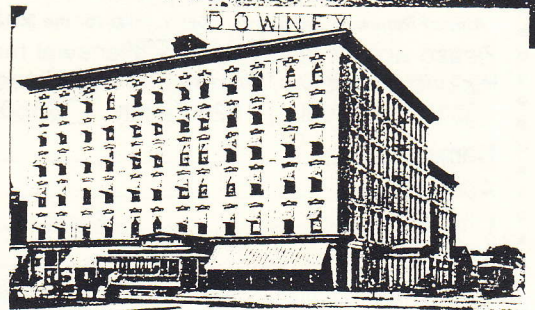
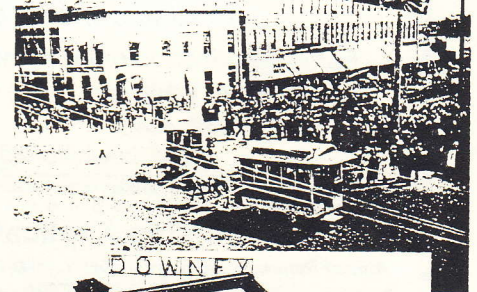
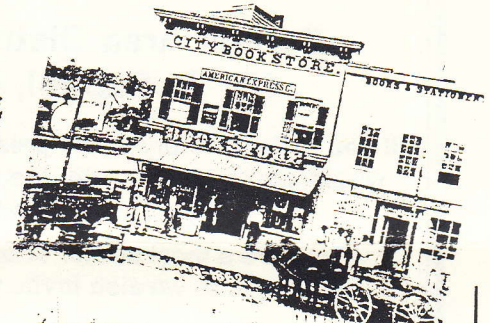
**Join Us...**

**Sunday,**

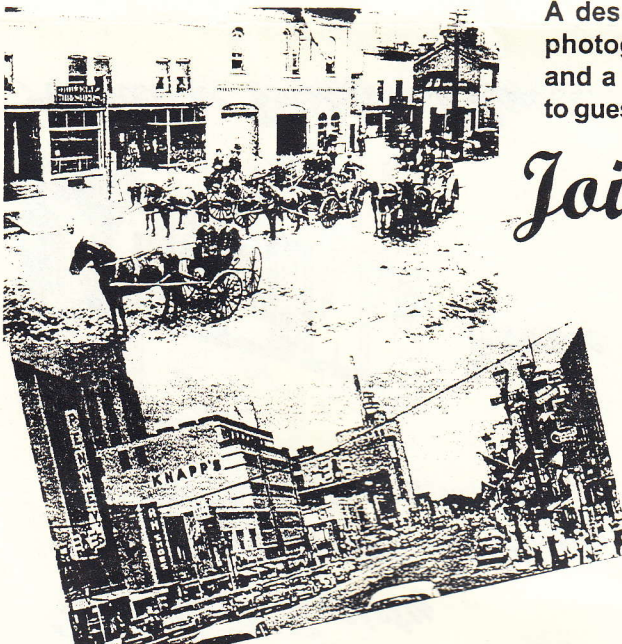
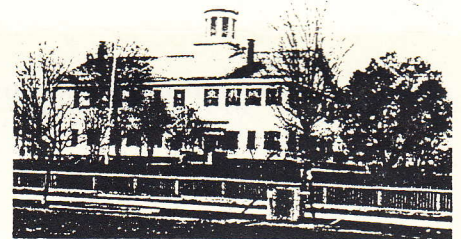
**September 22, 2002**

**3:30 P.M.**

**Capital Area District Library  
 401 S. Capitol, Lansing**



Lansing, Mich., 1910



Historical Society of Greater Lansing

Proudly announces the 2nd Annual

David R. Caterino

Collector's Showcase

Saturday, April 5, 2003

10:00 AM to 4:00 P.M.

Capital Area District Library
401 S. Capitol, Lansing

If you collect history of the greater Lansing area and would like to share it with the public we invite you to join us as an exhibitor.

If you are a local author or artist of the greater Lansing area we also invite you to participate.

Please contact us today!

For an application or more information contact:

Craig A. Whitford Harry Emmons
517.394.4443 517.485.5998
email: cawhitford@aol.com

Membership Application 2002-2003

Annual Renewals are due October 1, 2002 for the 2002-2003 program year.

Please accept my [ ] New [ ] Renewal membership in the Historical Society of Greater Lansing. I have enclosed:

[ ] \$15 Individual [ ] \$25 Family [ ] \$150 Life \$ \_\_\_ Gift

Name: \_\_\_\_\_

Address: \_\_\_\_\_

City: \_\_\_\_\_ State: \_\_\_\_\_ Zip: \_\_\_\_\_

Tel: \_\_\_\_\_ Email: \_\_\_\_\_

Send To: HSGL, Box 12095, Lansing, MI 48901

Sep-Oct 2002 Calendar

Reserve these historic dates now!

September 22, 2002 - 2:00 P.M.

"Polar Trek 2001"

Presented by Lynn Bartley

A multi-media show about the first all-woman crew to reach the North Pole from a Russian-based departure.

Friends Auditorium, Lower Level

Capital Area District Library, 401 S. Capitol, Lansing

September 22, 2002 - 3:30 P.M.

A Picture PostCard Walking Tour of Lansing Historical Society of Greater Lansing

Wear comfortable shoes and meet us at the Library for a walk down memory lane.

Capital Area District Library, 401 S. Capitol, Lansing

September 25, 2002 - 7:00 P.M.

"Lansing Yesteryears"

with Jim MacLean & Craig Whitford

Mid-Michigan Genealogical Society

Valley Court Senior Center, behind the East Lansing

Greyhound Bus Station

September 28, 2002 - 10A.M.-3:30P.M.

Genealogy Workshop

with Jim Pardee & Carol Callard

Pre-registration required by calling 367-6356

Capital Area District Library, 401 S. Capitol, Lansing

October 20, 2002 - 2:00 P.M.

Opening Books with Jim MacLean

A history of Lansing's Automotive Industry

Friends Auditorium, Lower Level

Capital Area District Library, 401 S. Capitol, Lansing

October 26, 2002 - 1:00 - 3:00 P.M.

Basic Scrapbooking Class with Leigh Fredline

Okemos

Pre-registration required by calling 367-6363

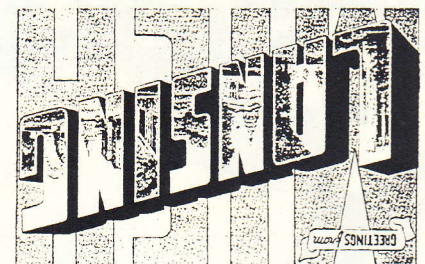


Bill & Judy Atkinson

01-02

Please PMS# to.

A Picture Postcard Tour.



P.O. Box 12095 Lansing, MI 48901

Historical Society of Greater Lansing

Non-Profit Org. U.S. Postage PAID Lansing, Mich. Permit No. 636

# *Lansing*

## *A Picture PostCard*

### *Walking Tour*



Bird's Eye View of Lansing, 1909

*Sponsored by*  
*The Historical Society*  
*of Greater Lansing*

1. Lansing Civic Center

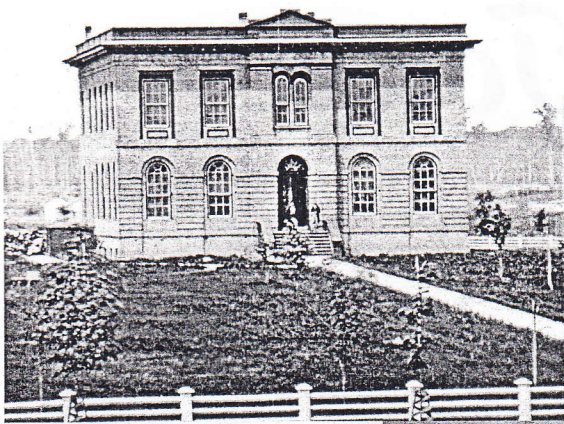
2. Cass Building



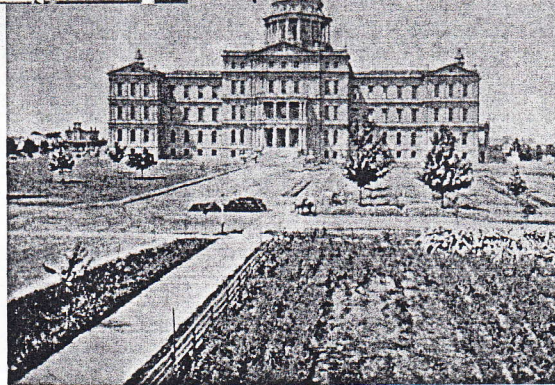
3. Plymouth Congregational Church, Built 1876 (Burned 1971) - SE Corner of Allegan and Townsend



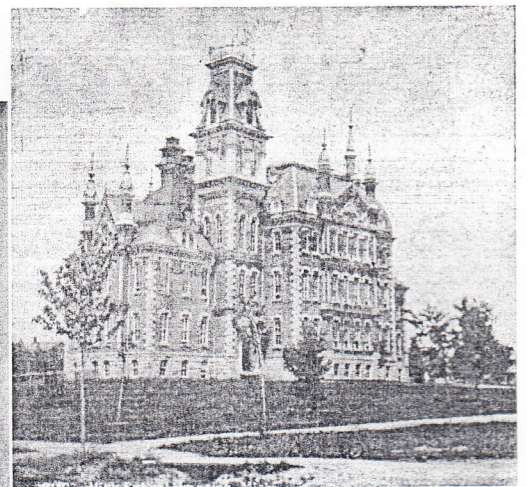
4. "Governor's House", built around 1847-49; relocated in 1925 by Lansing architect Edwin A. Bowd to 2033 West Main Street.



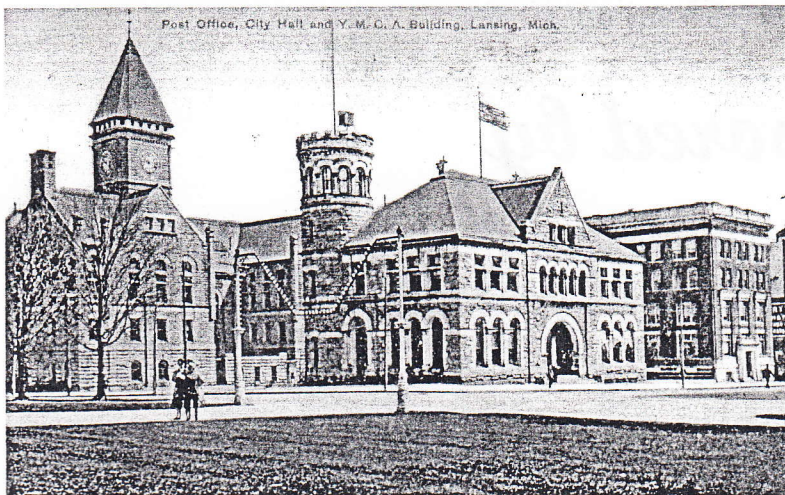
5. State Office Building, 1852; Razed 1870.



6. Michigan State Capitol, cornerstone laid on October 2, 1873; Dedicated on January 1, 1879; Restoration completed, 1992.



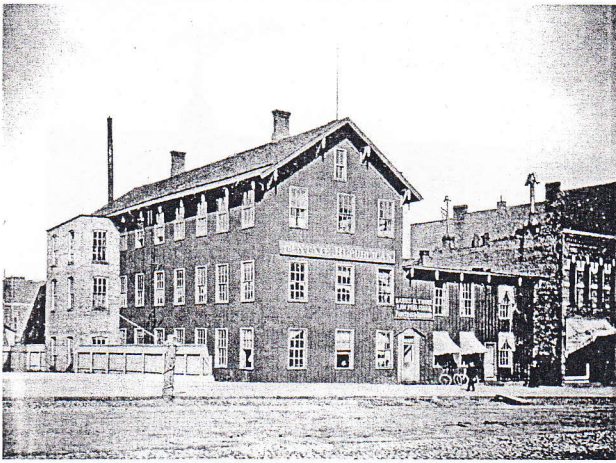
7. Central High School, built 1875 - corner of Capitol Ave and Shiawassee Street



8. Lansing City Hall, 1897-1959; 9. Post Office, 1893-1956; 10. YMCA



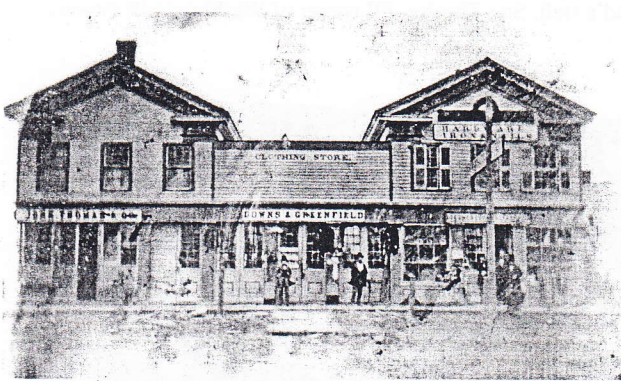
11. Present Lansing City Hall, 1959-



12. State Printer; Hosmer & Kerr; State Republican (YMCA) - Michigan Avenue, 1858



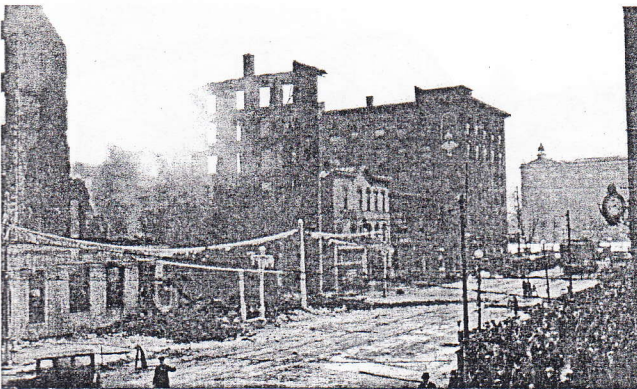
13. Oakland Building; Bijou Theatre - SE Corner of Capitol & Michigan



14. Original Stores on SW corner of Washington & Michigan, built c. 1852-54 (Site of the present Prudden Bldg.)



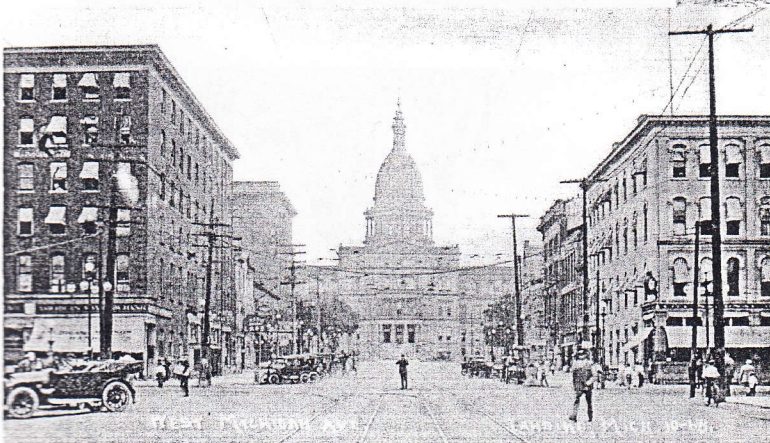
15. Prudden Building



15. Prudden Building Fire, 1921

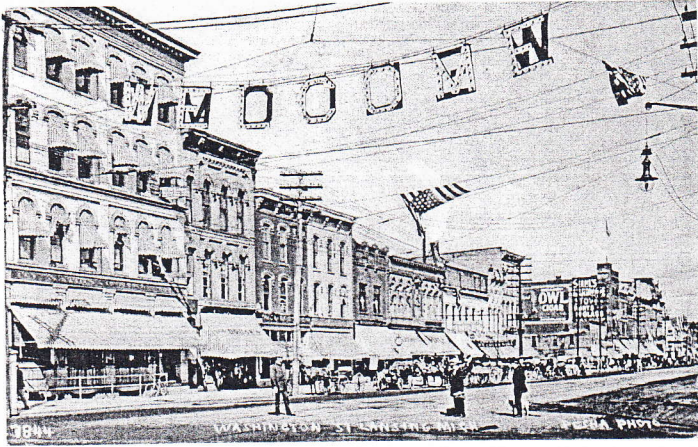


16. Corner of Washington & Michigan, street car turning south onto Michigan Ave, c. 1880.



18. Intersection of Washington Avenue and Michigan Avenue looking West, c. 1900-1910

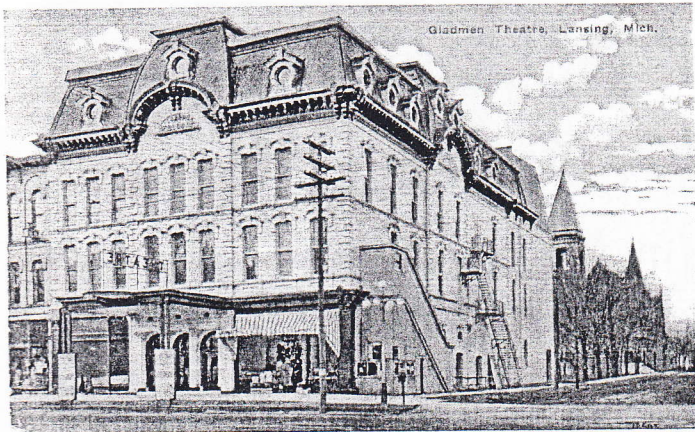
17. First City National Bank building, NE corner.



19. West side of Washington Ave North from Michigan Avenue



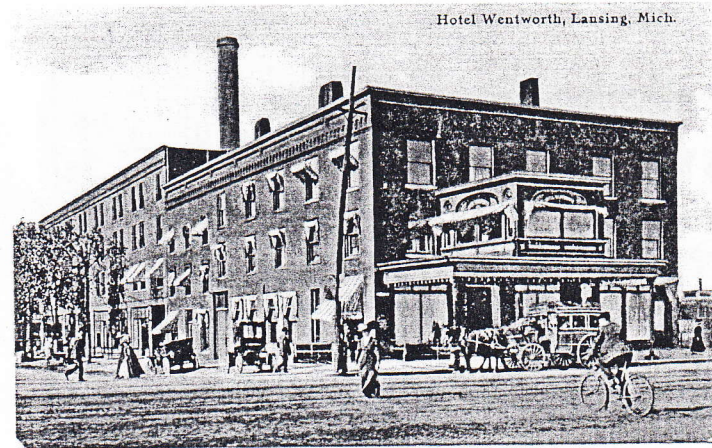
20. Mead's Hall, Star Theatre, SE corner of Washington & Ottawa



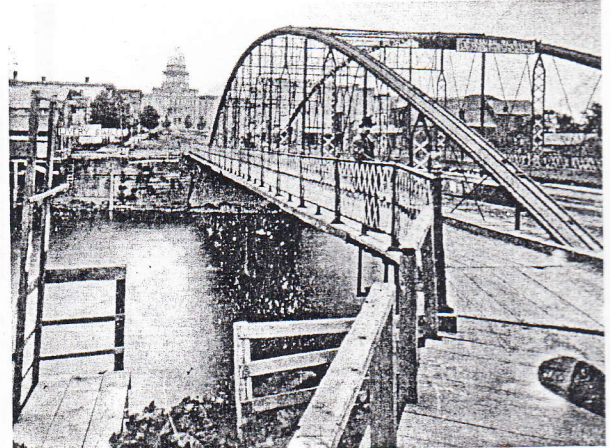
21. Buck's Opera house; Baird's; Gladmer Theatre (Built 1872)



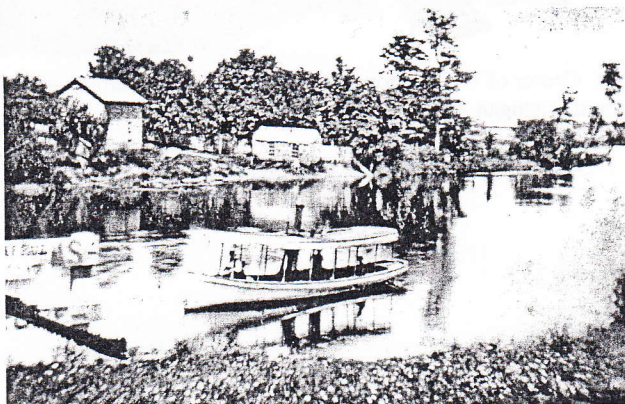
Bird's Eye View of Lansing West from Corner of Grand & Ottawa, 1910



22. Kern's Hotel, burned 1934; 23. Wentworth Hotel, razed 1966 - NE corner of East Michigan Ave & North Grand.



24. Michigan Avenue Bridge, built 1870



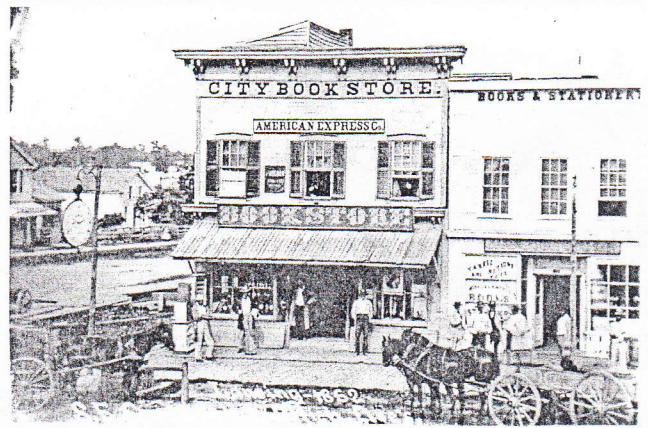
25. Steamer "Pickwick", c. 1870's



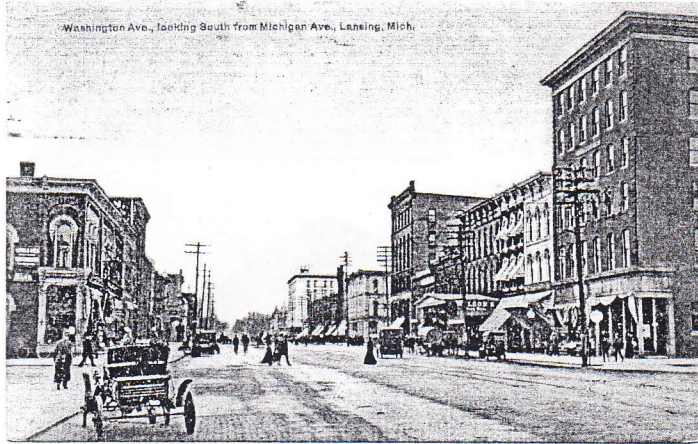
Interurban between Lansing and MAC, c. 1910



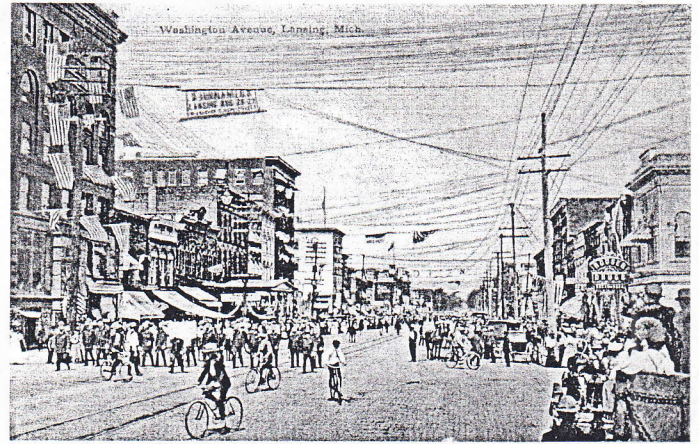
26. Chapman House, built 1870 - SW corner of Michigan Ave and Grand.



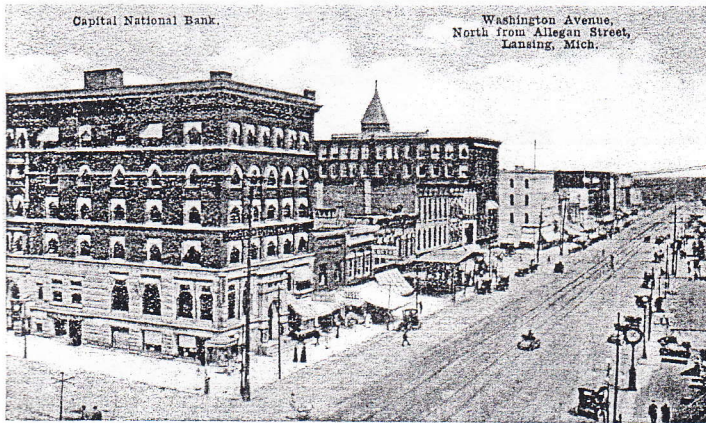
27. A. J. Viele's City Book Store, c. 1862 - SE corner of Michigan Ave and Washington.



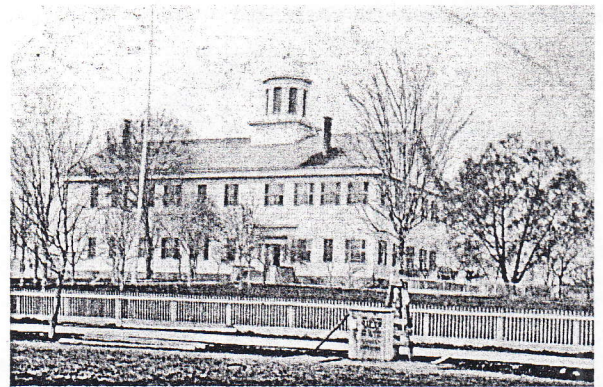
28. Washington Avenue South from Michigan Avenue



29. South Washington Ave North from Allegan; Rouser's Drug Store (1867) on NE corner of Allegan and Washington Ave.



30. Hollister Building - NW corner of Allegan and Washington Ave.



31. The second Capitol of the State of Michigan, built in the Town of Michigan, c. 1847 - center of block bounded by Washington, Capital, Allegan and Washtenaw.



32. State Office Building, c. 1871 - SW corner of Allegan & Washington Ave. Razed July 30, 1925.



33. Lansing Fire Department Station No. 1 - 112 E. Allegan St.



34. Hudson House, East side of Washington Ave South from Allegan Street



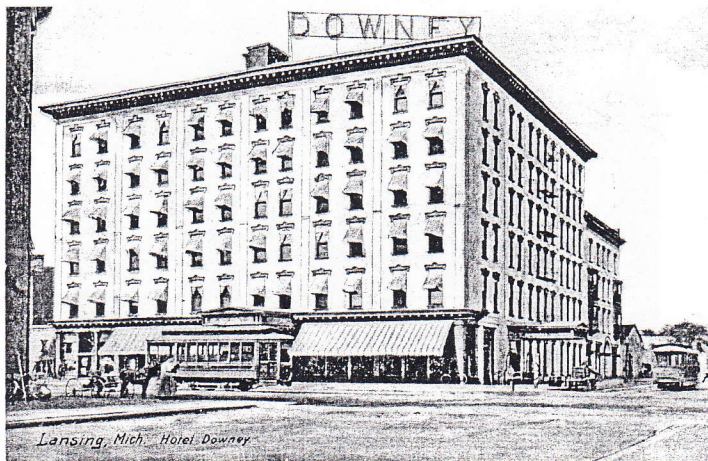
35. The Strand; the Michigan Theatre.



36. Original Lansing House, 1854 - SE corner of Washington Ave & Washtenaw Street. Destroyed by fire in 1861.



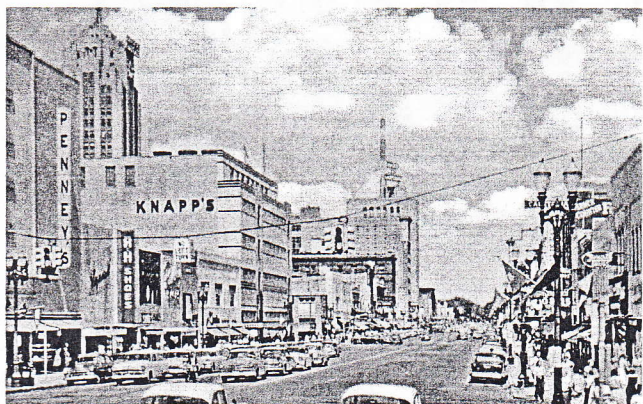
37. Lansing House, 1854 - SW corner of Washington Ave & Washtenaw Street. Built in 1866 by L.C. Baker & Lt. Luther Baker.



38. Hotel Downey, burned 1912 - SW corner of Washington Ave & Washtenaw Street.



39. South Washington Ave looking North from Kalamazoo Street.



40. Knapp's Department Store (1937) - SW corner of Washington Ave & Washtenaw Street. A 1950's view of S. Washington Ave looking North from Kalamazoo Street.



